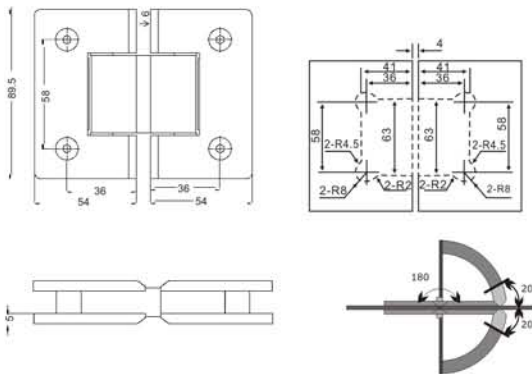


SSH403

• Glass to Glass Hinge



Finish: SSS, PSS, MBL

Glass to Glass Hinge 180°
Features

- Glass Thickness : 8-12mm.
- Material : Stainless Steel 304/316 Grade.
- Self-closing from 20°.
- Opening : Inwards & Outwards.
- Maximum Door Width : 800mm.
- Weight capacity : 45 Kgs.
- 100,000 Cycle Tested