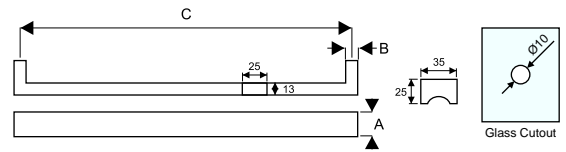
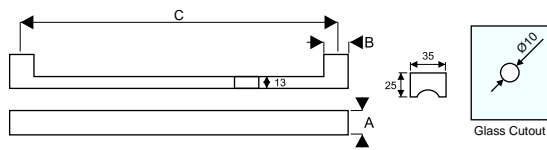


Rectangular Towel Bar

- Single sided towel bar with knob
- Suitable for : 8-12mm glass thickness
- Material : Stainless Steel



Finish: SSS, PSS, BL/PVD

Ref. No.	A	B	C	Glass Cutout
SHTK450R	35	25	450	$\text{Ø}10$

Finish: SSS, PSS, BL/PVD

Ref. No.	A	B	C	Glass Cutout
SHTK450R	25	13	450	$\text{Ø}10$
SHTK600R	25	13	600	$\text{Ø}10$

Round Towel Bar with Handle

- Back to back towel bar
- Suitable for : 8-12mm glass thickness
- Bar Thickness : 22mm
- Material : Stainless Steel



Finish: SSS, PSS, BL/PVD

Ref. No.	A	B	C	D	Glass Cutout
SHTH450	22	22	450	150	$\text{Ø}10$
SHTH600	22	22	600	200	$\text{Ø}10$

