

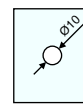
Rectangular Towel Bar

- Single sided towel bar
- Suitable for : 8-12mm glass thickness
- Bar Thickness : 25mm
- Material : Stainless Steel

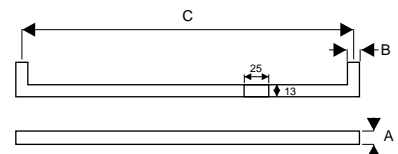


Finish: SSS, PSS, BL/PVD

Ref. No.	A	B	C	Glass Cutout
SHT450R	25	13	450	Ø10
SHT600R	25	13	600	Ø10



Glass Cutout

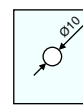

Round Towel Bar

- Back to back towel bar
- Suitable for : 8-12mm glass thickness
- Bar Thickness : 22mm
- Material : Stainless Steel



Finish: SSS, PSS, BL/PVD

Ref. No.	A	B	Glass Cutout
SHT450BB	22	450	Ø10
SHT600BB	22	600	Ø10



Glass Cutout

