

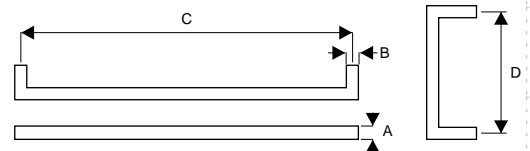
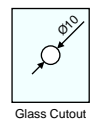
Square Towel Bar with Handle

- Back to back towel bar
- Suitable for : 8-12mm glass thickness
- Bar Thickness : 19mm
- Material : Stainless Steel



Finish: SSS, PSS, BL/PVD

Ref. No.	A	B	C	D	Glass Cutout
SHTH450SQ	19	19	450	150	Ø10
SHTH600SQ	19	19	600	200	Ø10


Rectangular Towel Bar with Handle

- Back to back towel bar
- Suitable for : 8-12mm glass thickness
- Bar Thickness : 25mm
- Material : Stainless Steel



Finish: SSS, PSS, BL/PVD

Ref. No.	A	B	C	D	Glass Cutout
SHTH450R	25	13	450	150	Ø10
SHTH600R	25	13	600	200	Ø10

