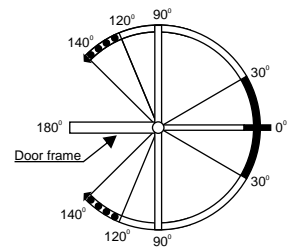
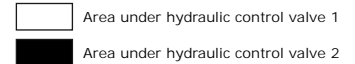


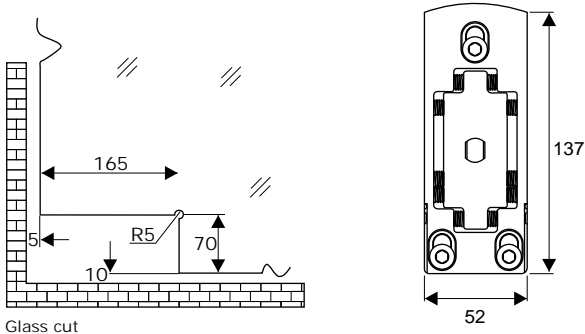
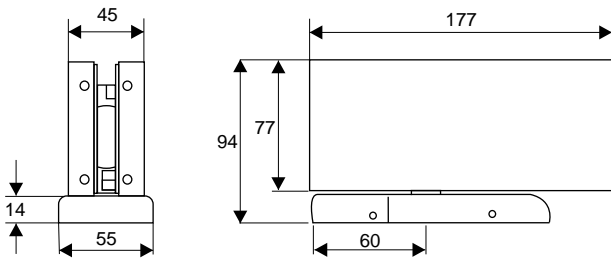
HP1003



Closing control



Finish: SSS, PSS, MBL



Features

- Made for glass doors with design elements.
- Bottom patch and floor spring function are combined.
- No floor preparation or excavation required.
- Quick and easy installation with its adjustable base seat which solve any alignment issues on site without taking down the door.
- Body made of special alloy aluminum to ensure high durability
- Tested with European standards for long durability and excellent functionality
- Opening upto 140° in both direction with hydraulic control from 120°, free rotation from 120° - 140°
- Heat treated high alloy steel mechanism with ball bearing for optimum efficiency.
- High quality anti-freezing oil and seal rings, makes it insensitive to temperature changes
- Soft closing or powerful latching action adjusted by valve to ensure proper closing. In case of hard to latch locks - the anti wind capability will ensure smooth functioning
- Can be re-installed after disassembly many times.
- For residential and commercial use in internal areas
- Cover plate in 304 Stainless Steel makes it rust resistant
- Loading capacity: 100 Kg.