

HCPDR - Hollow CPDR - Solid

20x10 RECTANGULAR 'D' HANDLE

Material:

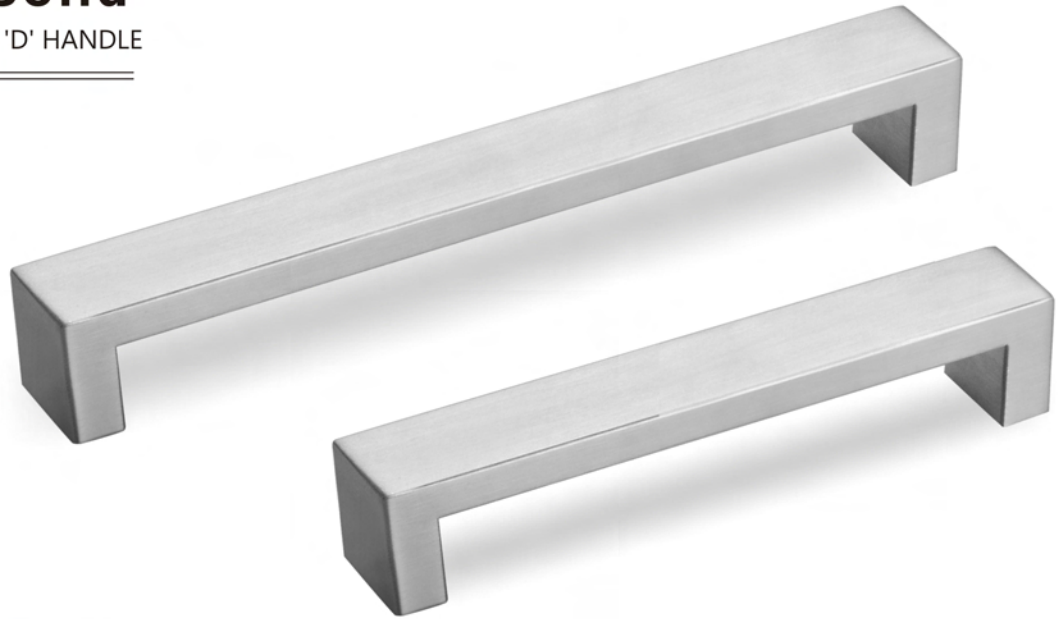
Stainless Steel

Projection:

35mm

Dia:

10mm



Available Finishes:

SSS | Satin Stainless Steel

PSS | Polished Stainless Steel

Available Sizes (mm)

Size : 106 | 138 | 170 | 202 | 234 | 298 | 362 | 458

CC : 96 | 128 | 160 | 192 | 224 | 288 | 352 | 448

