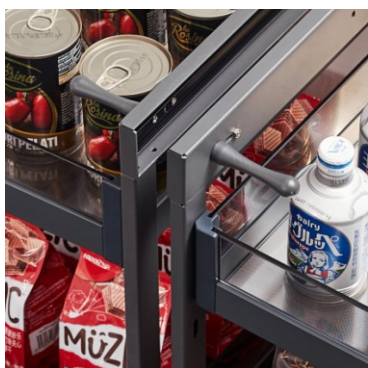
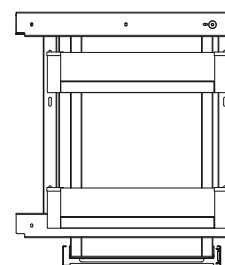
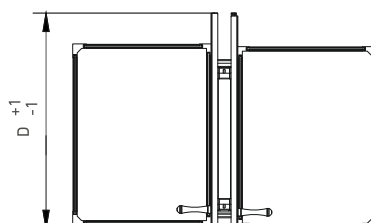
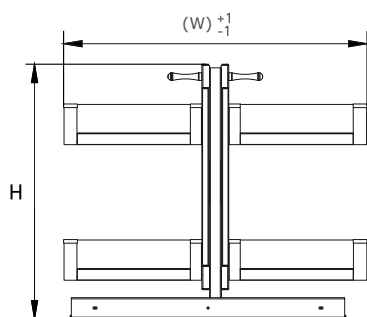


Flex Corner



Features

- Heavy duty slide with soft closing.
- Total loading capacity: 20kg.
- Cabinet width: 800mm.
- Antibacterial nano-powder coating.
- Finish: Grey+Glass.
- Anti skid base for slip resistance and easy cleaning.



Item Code	Cabinet Width (W)	WxDxH (mm)	Material
GKB.800.CR	800mm	650x480x560	Grey + Glass