

EAPL05



Features:

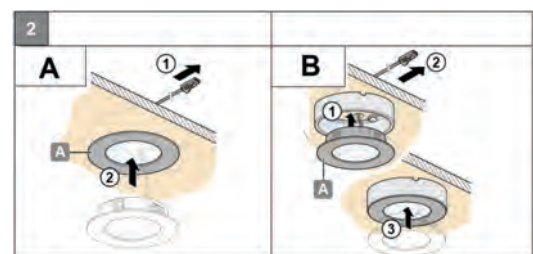
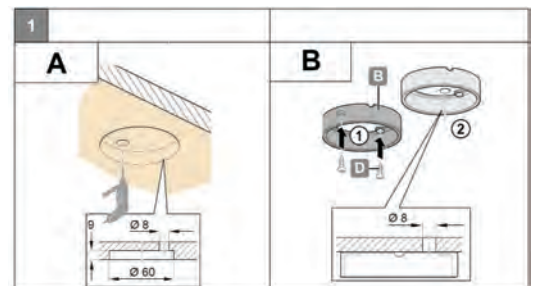
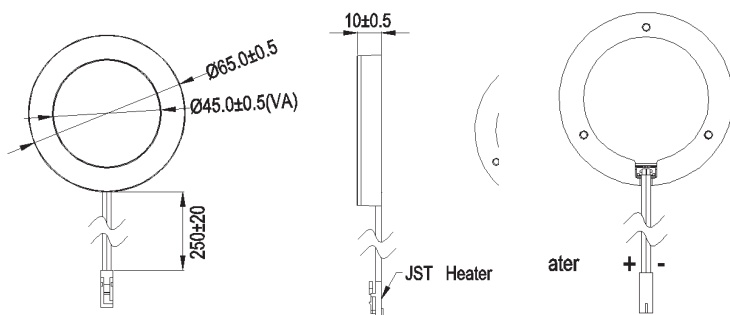
- Material: ABS and aluminium.
- Size: Ø65mm x H10mm.
- LED chip: 20pcs 2835.
- Installation: Recessed or mounted by ring with screw.
- Cutout: Ø60mm
- Silver, Black, White

Application:

Design for cabinet / Showcase / Shop Area illumination

Vertical&Horizontal Beamwidth Center Beam Lux

	112.1°	3000K	4000K	6000K
0.3m	74.27cm	112/367LX	119/393LX	109/359LX
0.5m	148.54cm	28/92LX	30/98LX	27/90LX
0.8m	222.80cm	12/41LX	13/44LX	12/40LX
1.0m	297.07cm	7/23LX	7/25LX	7/22LX
2.7m	802.09cm	0.1/3LX	1/3LX	1/3LX



Specification:

Power consumption	Power Input	Lum @ 6000K	Flux @ 0.5 M	CRI
1.8W	DC12V	153lm	90lx	≥90

Accessory:

Product Name	Item No	Photo
Mounted ring	EASM28	
LED Lead Cable	EACC33	