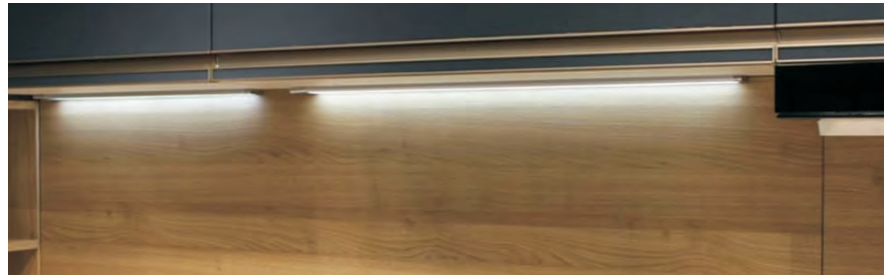


## LED cabinet/Drawer light with sensor



**EAHS03**

**EAHS05**



**Features:**

- With IR door sensor on the side of aluminium profile
- Size: 862x16x13mm
- Turn on/off by Door open/close
- DC12V, 60Pcs/M 2835 Chips

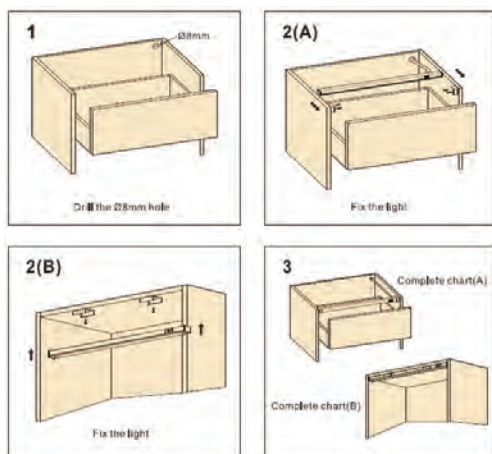
**Features:**

- With IR door sensor on the PVC Diffuser
- Size: 862x16x13mm
- Turn on/off by Door open/close
- DC12V, 60Pcs/M 2835 Chips

**Specification:**

Light Color	Wattage (W)	Power Input	Lumen (lm)	Length	CRI
3000k/Warm white	3/4.5	DC12V	180/270	563/862	≥90
4000k/Cool white	3/4.5	DC12V	180/270	563/862	≥90
6000k/Day light	3/4.5	DC12V	180/270	563/862	≥90

If input AC100-240V, need to add external LED driver (LD38/LD39)



Item No	Description	Photo
EASM1103	Stainless Steel Mounted Clip	
EASM1104	Plastic Mounted Clip	

**Applications:** Suitable for drawer or wardrobe / Cabinet

**Accessory:** LED driver, cable and connector