

LED Slim Cabinet Light



EACB10

EACB11



Features:

- Material: Polished Stainless Steel
- Size: Ø55mm x H8.0mm
- Color: Polish silver
- LED chip: 24pcs 3014
- Installation: Mounted by screw or adhesive tape

Features:

- Material: Polished Stainless Steel
- Size: 50mm x 50mm x H8.0mm
- Color: Polish silver
- LED chip: 24pcs 3014
- Installation: Mounted by screw or adhesive tape

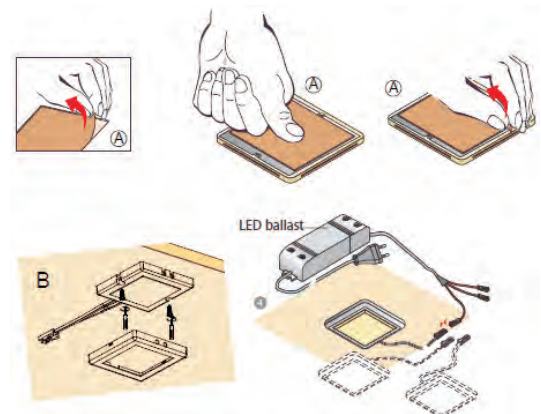
Specification:

Power consumption	Power Input	Warm White	Flux@1M	CRI
1.8W	DC12V	170lm	49lx	≥90

If input AC100-240V, need to add external LED driver (LD38/LD39)

Height	Avr./Max(lx)	Diameter(cm)
0.3m	216/544	68.54
1.0m	20/49	228.5
1.5m	9/22	342.7
2.0m	5/12	456.9
3.0m	2/6	685.4

Angle: 97.6°



Applications:

Design for cabinet / Showcase
Shop area illumination

Accessory:

LED driver, cable and connector