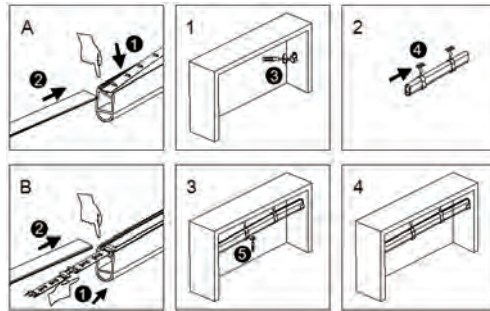
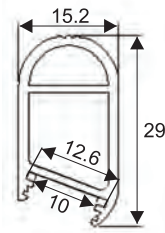


EAAP16



Features:

- Profile can be cut to size
- High quality PC cover make light more homogenous
- Installation: Mounted with stainless steel holder
- Aluminium body - AL6063-T5
- PC Cover: Frost, Transparent, Milky
- Range width: within 12mm
- Length: 0.5 to 2.5m

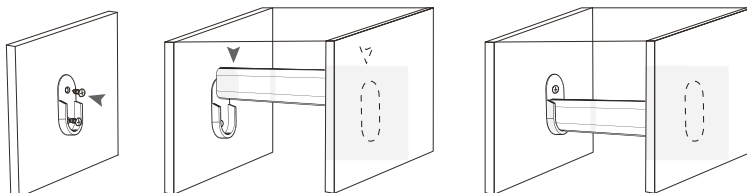
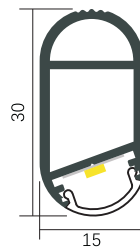
Accessory:

Item No.	Type
EAAP16/M	Milky Cover
EAAP16/F	Frosted Cover



Item No.	Description	
EASM09	Rail Support	
EASM08	Rail Support	

EAAP27



Features:

- Profile can be cut to size
- Special design for wardrobe, can load over 20kg.
- Installation: Surface mounted.
- Aluminium body - AL6063
- PC Cover: Frosted or Milky
- Range width: within 12mm
- Length: 0.5 to 2.5m

Accessory:

Item No.	Type
EAAP27/M	Milky Cover
EAAP27/F	Frosted Cover

Item No.	Description	
EASM09	Rail Support	
EASM08	Rail Support	

Application: Furniture lighting, store shelf lighting, window display light, stair light, cabinet shelves, display cabinet, wine cabinet