

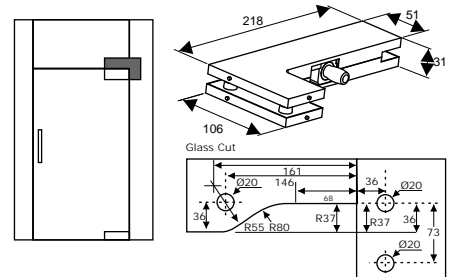
PF40



Finish: SSS, PSS, MBE

Features

- Side panel patch fitting.
- Counter bearing for top patch fitting.
- Suitable for : 10 to 12mm Glass.
- Universal application.



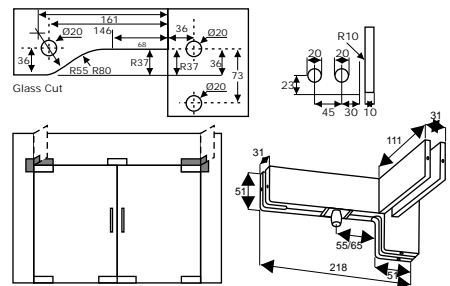
PF41R/L



Finish: SSS, PSS

Features

- Fin panel pivot patch fitting.
- Counter bearing for top patch fitting.
- Suitable for : 10 to 12mm Glass.
- Universal application.



PF50



Finish: SSS, PSS

Features

- Double pivot top patch fitting.
- Counter bearing for top patch fitting.
- Suitable for : 10 to 12mm Glass.
- Universal application.

