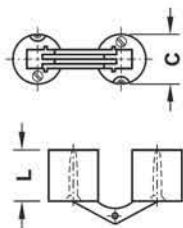


**Concealed Hinge for wood thickness
14–28 mm**

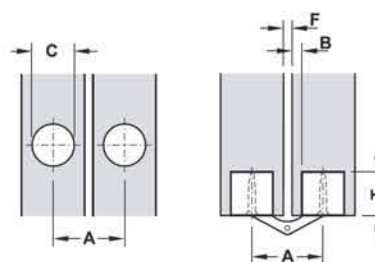


Product Description:

- Opening angle: 180°
- Material: Brass
- Finish: Matt
- Mounting: For right and left hand use
- Installation: For screw fixing

Installation:

- Position is secured by tightening the tensioning screw
- With extremely heavy loads, each of the cylinders can be secured from the front using a chipboard or wood screw



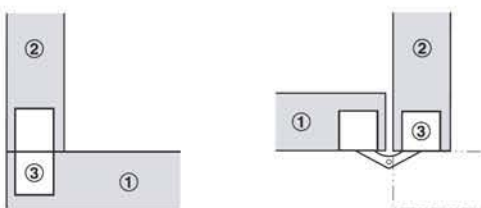
Item no.	For wood thickness
EA510	14-19
EA511	17-22
EA512	20-26
EA513	22-28

Application and planning dimension

For wood thickness mm	14-19	17-22	20-26	22-28
Screw Ø mm	2.5	3	3.5	3.5
Length mm	11	13.5	15.5	16.5
Drill bit Ø mm	10	12	14	16
Drilling depth T mm	11	13.5	15.5	16.5
Dim. A mm	16	20	23	25
Dim. B mm	2	2.2	3	3
Gap F mm	2.5	3.5	3	3

Application

Mounting example for butting overlay doors



Door Closed

Door Open

①Door ②Side panel ③Hinge

Mounting example for butting overlay Flaps

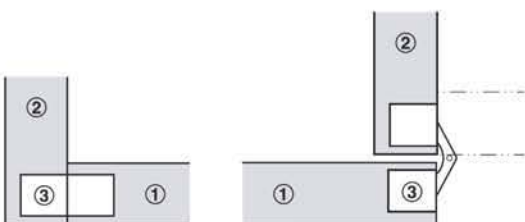


Flap Closed

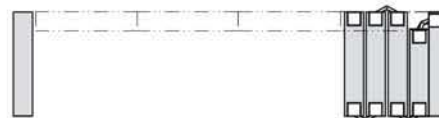
Flap Open

③Hinge ④Flap ⑤Base panel

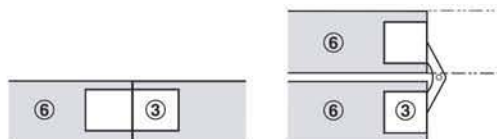
Mounting example for butting inset doors



Example for folding door



Mounting examples for two panels



Panel Closed

Panel Open

③Hinge ④Flap ⑤Base panel