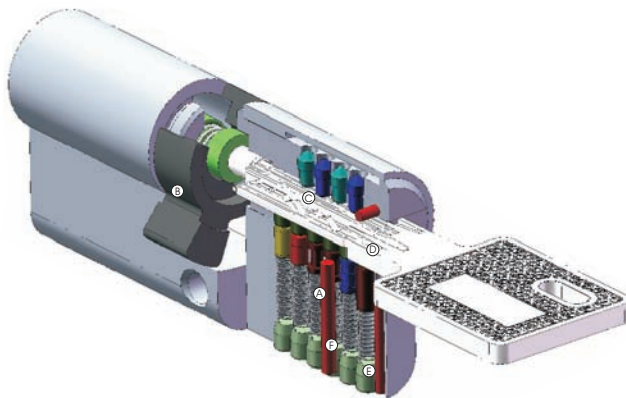


CYX Series

Ref. No.	Size
● CYX260	: 60mm Double Cylinder
● CYX270	: 70mm Double Cylinder
● CYX280	: 80mm Double Cylinder
● CYX290	: 90mm Double Cylinder
● CYX360	: 60mm Key & Turn Cylinder
● CYX370	: 70mm Key & Turn Cylinder
● CYX380	: 80mm Key & Turn Cylinder
● CYX390	: 90mm Key & Turn Cylinder
● CYX145	: 45mm Single Cylinder


Double entry function

EuroArt CYX series can be unlocked from one side of the door even if a key is inserted on the other side

- Ⓐ **Hardened steel pin tumblers**
Superior quality material increasing the life of locking system.
- Ⓑ **Locking Cam**
Correct key will open the lock
- Ⓒ **Hardened steel core pins, chemically nickel plated**
Protection against methods of manipulation
- Ⓓ **Revision pins**
Control points for key authorisation
- Ⓔ **Springs**
Element in the pin tumblers designed to move the pins into the correct position
- Ⓕ **Body drilling protection rod**
Element in the pin tumblers designed to move the pins into the correct position

Features

- Durable, Reliable and Smooth operation, resistant to both dirt and freezing.
- No key-wear: virtually no bent, broken or worn keys.
- The key control system is designed to maintain the integrity of the key control program while allowing the provision of local support and keys
- Brass pins with special shape (Anti drilling, Anti picking and Anti bumping protection).
- Supplied with five 3mm keys

Finish: SN, MAB, PC, SB, PB, MBL

